



藍牙定時遙控器

Bluetooth Timer Remote Control

BG-100



ID: B019832



使用說明書

簡介

非常感謝您購買品色產品，使用前請詳細閱讀說明書及相關事項。BG-100是一款高性能的藍牙定時遙控器。它能遠距離遙控相機拍攝，具備單張拍攝、連續拍攝、B門拍攝、2秒延時拍攝、定時計劃拍攝，所有功能都可通過帶有藍牙的蘋果設備輕鬆遙控拍攝（4.0以上的藍牙版本）。

注意事項

- ▲ 在安裝設備前，請確認相機是關機狀態。
- ▲ 本產品屬電子產品的附件，有可能因外界環境因素影響而造成照相機不能或異常動作，這種情況的可能性非常小。
- ▲ 不要使元件受到強烈振動，否則可能引起產品發生故障。
- ▲ 長時間不使用時，請將產品的電源關閉，並將電池取出。
- ▲ 安裝電池時極性切勿弄反，否則電池可能滲漏腐蝕性液體、發熱或爆炸。
- ▲ 產品與設備連接時，請勿拉扯。
- ▲ 請勿置于高溫中，如陽光直射下的封閉汽車內、控制面板等高溫地方。
- ▲ 請保持乾燥，勿用濕手接觸產品，亦不可將產品浸入水中或暴露雨中，否則可能引起不能使用。
- ▲ 請勿在易燃氣體中使用，違反此警告可能引起爆炸或火災。
- ▲ 本產品涉及電池，關於電池的使用請嚴格按照相應的操作規範，否則可能引起爆炸、火災或人身傷害。

包裝物品

本產品包裝內含以下物品，如拆開包裝發下缺失，請與經銷商聯系。

藍牙定時遙控器	1個
連接綫	佳能2條/ 尼康2條/ 索尼1條
說明書	1份（本說明書）



- ① 指示燈：待機情況下，綠燈慢閃，對焦時為綠燈快閃，拍攝時為紅燈快閃。
- ② 快門按鍵：半按為對焦模式，全按為拍攝模式。
- ③ 電源開關：按此按鍵3秒為開機或關機模式。
- ④ 快門接口：快門控制輸出接口，使用時需用連接綫與相機快門接口連接。
- ⑤ 藍牙ID號碼：BG-100藍牙ID號碼，每個BG-100都有一個唯一的ID號碼。

電源指示燈

- 1: ● BG-100在開機狀態下安裝電池後設備依然為開機狀態，如需使用請按電源開關鍵打開設備電源。在開機狀態下，按下電源開關鍵2秒，綠色指示燈亮2秒後為已開機狀態。
 - BG-100在已開機狀態下拆卸電池重新安裝後設備依然為開機狀態，如需關閉請按電源開關鍵關閉。在開機狀態下，按下電源開關鍵2秒，紅色指示燈亮2秒後為開機狀態。
- 2: ● 開機後沒有與設備連接時指示燈紅燈每隔1秒閃爍一次，與設備正常連接後，綠燈每隔2秒閃爍一次。
 - 設備正常連接後，對焦時指示燈為綠燈亮，拍攝時指示燈為紅燈亮。
 - 設備正常連接後，開始執行延時拍攝時，綠燈每隔1秒閃爍一次。
 - 設備正常連接後，開始執行定時計劃拍攝時，綠燈每隔1秒閃爍兩次。
 - 設備正常連接後，執行定時計劃拍攝時被不正當斷開或設備退出時，BG-100會繼續執行定時計劃拍攝，指示燈紅燈每隔1秒閃兩次。
- 3: ● 設備使用的電池電源不足時，紅燈連續閃爍四次。(建議在不使用設備時，請拆卸電池後妥善保管設備。)

開始使用

- 請使用帶有藍牙的蘋果移動設備如手機、平板電腦，在設備上登陸APP store 并在搜索處輸入軟件名稱Pixel dslr shutter controller下載并安裝此軟件。
- 使用前需打開設備的藍牙功能，此軟件僅支持4.0以上的藍牙版本，確認相機和藍牙設備BG-100連接好。

開始使用，打開BG-100的電源開關，在連接的設備中點擊已安裝好的Pixel藍牙軟件，如與BG-100連接成功（圖①）會顯示藍牙的ID號碼，點擊該ID號碼即可進入藍牙定時遙控的操作界面（圖②）。如無法連接或BG-100電源未開啓，圖①處則不會顯示ID號碼。多套BG-100在同一環境使用時，則顯示多個ID號碼，此時需要選擇對應的ID號碼即可進入使用。如點擊ID號碼無法進入，請退出此軟件并關閉BG-100電源，重新點擊該軟件進入并開啓BG-100電源即可。



拍攝功能介紹



- ① 單拍模式
- ② 連拍模式
- ③ B門拍攝
- ④ 2S延時拍攝
- ⑤ 定時計劃拍攝



① 單拍模式：點擊該按鈕為對焦模式，向右滑動為單張拍攝模式。



② 連拍模式：點擊該按鈕為對焦模式，向右滑動為連拍攝影模式，此功能與相機的拍攝模式配合使用。



③ B門模式：點擊該按鈕為對焦模式，向右滑動為B門拍攝模式，此功能與相機B門模式配合使用。

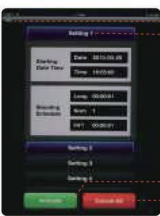


④ 2S延時拍攝：點擊該按鈕為對焦模式，向右滑動為2S（秒）延時拍攝。

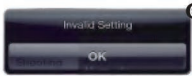


⑤ 定時計劃拍攝：可設置1-10個不同的定時計劃拍攝，可設置定時計劃拍攝的日期、時間、曝光時間、拍攝張數以及間隔時間。

注：當相機鏡頭對焦功能設置為自動AF時，大部分相機在沒有找到拍攝焦點時，即使收到拍攝信號也不會進行拍攝。



- ① 返回按鈕
- ② 定時計劃拍攝
- ③ 確認按鈕
- ④ 全部取消按鈕



① 返回按鈕：點擊該按鈕返回上一頁面。



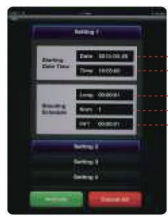
② 定時計劃拍攝：點擊進入可設置詳細的定時計劃拍攝，此定時計劃可設置1-10個不同的拍攝計劃。第一個設置完成時才可進入第二個設置。



③ 確認按鈕：該按鈕為確認設置功能按鈕，點擊該按鈕可選擇確認設置或退出確認（圖 5），Cancel 為退出確認設置，Confirm 為確認設置按鈕。如參數設置正確，點擊該按鈕將直接進入下一定時計劃。如參數設置錯誤，點擊該按鈕則顯示（圖 6），定時計劃設置的日期與時間必須在設備的時間之後，如在設備的時間之前，則無法確認，會顯示（圖 6），需重新更改設置。



④ 全部取消按鈕：點擊該按鈕（圖 7）可選擇全部取消設置“Confirm”或退出取消設置“Cancel”。



- ① 拍攝日期設置
- ② 拍攝時間設置
- ③ 拍攝曝光時間設置
- ④ 拍攝張數設置
- ⑤ 拍攝間隔時間設置



- Date** ① 拍攝日期設置：點擊該圖標如（圖①）根據設置需要上下移動選擇日期，Done為確認按鈕，Cancel為退出按鈕，此日期為開始計劃拍攝日期。
* 拍攝日期設置會隨着設備的使用語言而發生變化（即與設備所用的語言一致）。
- Time** ② 拍攝時間設置： 點擊該圖標如（圖②）根據設置需要上下移動選擇時間，Done為確認按鈕，Cancel為退出按鈕。此時間為開始計劃拍攝時間。
- Long** ③ 拍攝曝光時間設置： 點擊該圖標如（圖③）根據設置需要上下移動選擇拍攝曝光時間。Done為確認按鈕，Cancel為退出按鈕。
- Num** ④ 拍攝張數設置： 點擊該圖標如（圖④）根據設置需要上下移動選擇拍攝張數。Done為確認按鈕，Cancel為退出按鈕。
- Int'l** ⑤ 拍攝間隔時間設置： 點擊該圖標如（圖⑤）根據設置需要上下移動選擇拍攝的間隔時間。Done為確認按鈕，Cancel為退出按鈕。

注：設置日期、時間時不能設置在設備的時間之前，否則該設置無法確認。

本說明書中的信息更新至2013/09/28日，如果要與此日期之後發布的產品組合使用，有關信息請向品色經銷商諮詢。

現在你可以體驗無與倫比的品色產品。如有任何疑問可以向當地經銷商諮詢，或登陸 www.pixelhk.com.cn查詢。



Bluetooth Timer Remote Control BG-100



ID: B019832



Product Manual

Overview

Thank you for purchasing PIXEL product. Please read and fully understand this manual before use. BG-100 is a high performance Bluetooth Timer Remote Control. It can remote control the camera under long distance with single shooting, continuous shooting, Bulb shooting, 2-second delay shooting and timer shooting. All functions are available via Apple devices with Bluetooth for easy remote shooting. (Bluetooth version: 4.0 or higher).

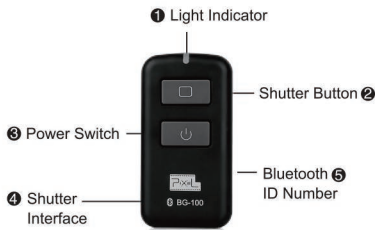
Cautions

- ▲ Before installing, make sure the camera is powered off.
- ▲ This product is an electronic device, it may be affected by external environmental factors and cause the camera cannot or malfunction. Nevertheless, this possibility is very small.
- ▲ Do not let the components suffered from strong vibration, otherwise it may cause the product failure.
- ▲ When not in use for long durations, please turn off the power of the transmitter and the receiver and remove the batteries.
- ▲ The batteries should be installed correctly. Reverse polarity may cause batteries to leak corrosive liquids, heat or explosion.
- ▲ When connecting the cable to the device, do not pull the wires directly.
- ▲ Do not store in a high temperature, such as a closed car under direct sunlight, the dashboard and other high-temperature areas.
- ▲ Keep dry, do not touch the product with wet hands. Do not immerse in water or exposed to rain as this may lead to device failure.
- ▲ Do not use near flammable gases. Failure to follow this warning may cause explosion or fire.
- ▲ This product involves batteries, please strictly follow the instruction for proper operation. Failure to follow this may cause explosions, fire or personal injury.

Items Included

After unpacking, please check if the below items are included in the package. If there is any item missing, please contact your dealer.

Bluetooth Timer Remote Control	1 pc
Shutter Connecting Cable	2 pcs For Canon/ 2 pcs For Nikon/ 1 pc For Sony
Manual	1 pcs (this manual)



- 1 Light Indicator: On standby mode, green light will flash slowly. When focusing, green light will flash. During shooting, red light will flash.
- 2 Shutter Button: Half-press to focus mode, full-press to shooting mode.
- 3 Power Switch: Press this button for 3 seconds to turn on/off.
- 4 Shutter Interface: Shutter control output interface, shutter connecting cable is required to connect camera shutter interface when in use.
- 5 Bluetooth ID Number: BG-100 Bluetooth ID number, every BG-100 has a unique ID number.

Power Indicator

- 1 • BG-100 is still under shutdown status when you install the batteries under power off situation. To use, please press the power key to switch on the device. Under shutdown status, press the power key for 2 seconds, after the green light indicator was on for 2 seconds, the device was turned on.
 - BG-100 was still switched on when you remove and re-install the batteries under power on status. To turn off, please press off the power key. Under power on situation, press the power key for 2 seconds, after the red light indicator was on for 2 seconds, the device was turned off .
- 2 • After switched on, the red light indicator will flash once every second if the device is not connected. If the device properly connected, the green light indicator flashes once every two seconds .
 - After the device is properly connected, the focus light indicator is green. Red light is lit when shooting.
 - After the device is properly connected, when you start the delay shooting, the green light flashes once every second.
 - After the device is properly connected, when you start to plan timer shooting, the green light flashes twice every second.
 - After the device is properly connected, when you executive the timer shooting and improperly disconnected or the device is withdrawn, BG-100 will continue to perform regularly on the timer shooting, the red light indicator flashes twice every second.
- 3 • When the battery power of the device is low, the red light continues to flash four times.
 - * It is recommended when the device is not in use, please remove the batteries and keep the device properly.

Getting Started

- Please use Apple mobile devices with Bluetooth such as iPhone, iPad. Search the name of the software by entering "Pixel DSLR shutter controller" in APP Store on those devices, then download and install.
- Please turn on the Bluetooth feature before use. This software only supports Bluetooth version 4.0 and above. Make sure the camera and Bluetooth device BG-100 is well connected.

Turn on the power switch of the BG-100 to start using, click Pixel Bluetooth software that is installed on the connected devices. Once it was successfully connected with BG-100 (figure 1), Bluetooth ID number will be displayed. Click the ID number to enter the operation interface of Bluetooth Timer Remote Control (figure 2). If you cannot connect or BG-100 is not turned on, (figure 1) ID number is not displayed. When using multiple sets of BG-100 in the same environment, it will display multiple ID numbers. Then, you need to select the corresponding ID number and log in. If you can't access by tapping the ID number, please quit the software and turn off the power supply of BG-100. Re-click the software and turn on BG-100.



Shooting Control



1 Single Shooting: Click this button to focus mode, slide to the right to single shooting mode.



2 Continuous Shooting Mode: Click this button to focus mode, slide to the right to continuous shooting mode. This function can work with the shooting mode of camera.



3 Bulb Mode: Click this button to focus mode, slide to the right to Bulb shooting mode. This function can work with the Bulb shooting mode of camera.

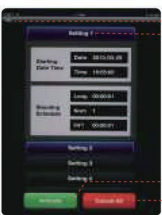


4 2S Delay Shooting: Click this button to focus mode, slide to the right to 2S (second) delay shooting mode.

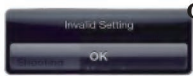


5 Timer Shooting: You can set 1-10 different timer shooting. You can also set "date" and "time", "exposure time", "number of shots" and "interval".

Note: When the camera lens function set to auto focus AF, and most of the cameras cannot find the focus, even the shooting signal was received, it will not shoot.



- 1 Return Button
- 2 Timer Shooting
- 3 Activate Button
- 4 Cancel All

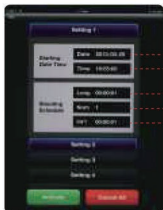


Back 1 Return Button: Click this button to return the previous page.

Setting 1 2 Timer Shooting: Click to set the detailed timer shooting, it can set 1-10 different shooting plans. The first setting is completed before entering the second set.

Activate 3 Activate Button: This button is to confirm the function setting. Click to confirm the setting or cancel the setting (figure 5). 'Cancel' to exit confirmation settings and 'Confirm' to confirm the setting. If the parameter settings are correct, click this button to go directly to the next timing plan. If settings are incorrect, click this button will display (figure 6). The date and time of the scheduled settings must be after your current time. If it is before, then it cannot be confirmed and will display (figure 6)

Cancel All 4 Cancel All Button: Click this button (figure 7) can select 'Confirm' to cancel all the settings or 'Cancel' to exit the cancel setting.



- 1 Shooting Date Setting
- 2 Shooting Time Setting
- 3 Exposure Time Setting
- 4 Set the Number of Shots
- 5 Interval Time Setting



Date ① Shooting Date Setting: Click this icon (figure1) to move up and down to select date. 'Done' button to confirm, 'Cancel' is the exit button. This date is the one you start planning for shooting.

*The shooting date setting will be changed according to the language you are using on the device (ie, the language used is consistent with the device)

Time ② Shooting Time Setting: Click this icon (figure2) to move up and down to select time. 'Done' button to confirm, 'Cancel' is the exit button. This time is the one you start planning for shooting.

Long ③ Exposure Time Setting: Click this icon (figure3) to move up and down to select exposure time. 'Done' button to confirm, 'Cancel' is the exit button.

Num ④ Set the Number of Shots: Click this icon (figure4) to move up and down to select the number of shots. 'Done' button to confirm, 'Cancel' is the exit button.

Int'l ⑤ Interval Time Setting: Click this icon (figure5) to move up and down to select interval time between shots. 'Done' button to confirm, 'Cancel' is the exit button.

Note: The date and time must not be set before your current time, otherwise the settings cannot be

The information of this instruction manual is updated as of 28th Sep, 2013. For information on the use of the combination of product marketed after this date, please contact PIXEL's dealer for advice.

Now you can experience unparalleled PIXEL product. If you have any questions, you can consult your local dealer. Or, visit our website www.pixelhk.com.